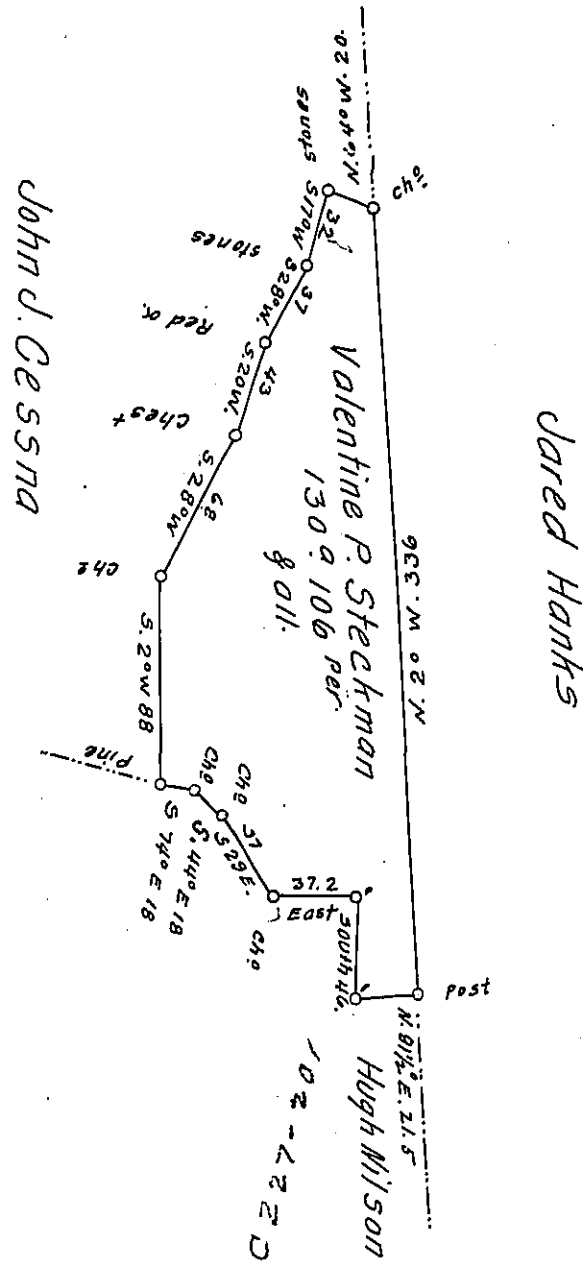


43 150



Situate On the South East side of Tusseys Mountain in Southamp-
 ton township Bedford County Containing 130 Acres 106 perches
 and the usual allowance of Six pr. Cent for Roads &c. Surveyed
 by Samuel Ketterman the 2nd day of January A. D. 1872. In pursuance
 of a Warrant granted to Valentine P. Steckman dated the 19th of
 December 1871.

Robert B. Beath }
 S. G. }

Hiram Blackburn C.S.

IN TESTIMONY that the above is a copy of the original remaining on file in
 the Department of Internal Affairs of Pennsylvania, made
 conformably to an Act of Assembly approved the 16th day of
 February, 1833, I have hereunto set my Hand and caused
 the Seal of said Department to be affixed at Harrisburg,
 this twentieth day of March 1907.

Loaco B. Brown
 Secretary of Internal Affairs.